

FPPL 2026 KICKOFF

MAY, 21 2026



AGENDA

- **ALF UPDATE – BOB TRAPANI, ALF EXECUTIVE DIRECTOR**
- **2025 SUMMARY & 2026 OVERVIEW– DOM**
- **STORE UPDATE – STEVE**
- **NEW VESTIBULE DISPLAY – SUE/ADAIR**
- **NEW DOCENT TRAINING – ADAIR**

TODAY'S OBJECTIVES

- LEARN ABOUT THE AMERICAN LIGHTHOUSE FOUNDATION
 - REVIEW VITAL INFORMATION FOR A SUCCESSFUL 2026! YOU'LL PROBABLY BE HEARING A LOT OF REPETITION, PLEASE BEAR WITH US.
 - 2026 OBJECTIVE: PREPARE FOR THE 200TH ANNIVERSARY OF A LIGHT STATION AT PEMAQUID POINT IN 2027
 - EXECUTIVE COMMITTEE
 - DOM PUCCI – CHAIRMAN
 - SUE BERGHERR – DIRECTOR, INTERNET PRESENCE
 - ADAIR HEYL – DIRECTOR, SCHEDULING
 - STEVE WHITFIELD – DIRECTOR, STORE
 - BRUCE BYKOWSKI – TREASURER
- WE'RE ALWAYS LOOKING FOR NEW BOARD MEMBERS, SEE ONE OF US IF YOU'RE INTERESTED IN GETTING MORE INVOLVED

AGENDA

- **ALF UPDATE – BOB TRAPANI, ALF EXECUTIVE DIRECTOR**
- 2025 SUMMARY & 2026 OVERVIEW – DOM
- STORE UPDATE – STEVE
- NEW VESTIBULE DISPLAY – SUE/ADAIR
- NEW DOCENT TRAINING – ADAIR

AGENDA

- ALF UPDATE – BOB TRAPANI, ALF EXECUTIVE DIRECTOR
- 2025 SUMMARY & 2026 OVERVIEW– DOM**
- STORE UPDATE – STEVE
- NEW VESTIBULE DISPLAY – SUE/ADAIR
- NEW DOCENT TRAINING – ADAIR

2025 STATISTICS

ATTENDANCE STATS vs 2024:

Attendance	Up 5.7%
Donations per Visitor	Down 2.7%
Total Donations	Up 2.1%

GREAT JOB EVERYONE!!

WELCOME TO OUR NEW DOCENTS

- **HANNAH HORNSBY**
- **CAROLINE JANOVER**
- **BETH MCKENNA**
- **JACQUELINE MONTGOMERY**
- **BARRY MULLIN**

- **ROOKIES: IF YOU FIND YOUR HEAD SPINNING AFTER WE FINISH TODAY PLEASE ASK FOR MORE HELP!!**
 - **ASK TO SHADOW AN EXPERIENCE PERSON DURING ONE OF THEIR SHIFTS**
 - **ASK IF ONE OF OUR GRIZZLED LIGHTHOUSE KEEPERS CAN BE WITH YOU ON YOUR 1ST SHIFT**

FPPL FOUNDING MEMBERS

- **THERE ARE THREE ACTIVE FPPL FOUNDING MEMBERS PLUGGING AWAY FOR US!!**
 - **CAREN CLARK, OUR HISTORIAN & ALTERNATE**
 - **PATTY HUGHES, BEGINNING HER 24nd SEASON AS A FULL-TIME DOCENT!**
 - **SUE YOUNG, THE PILLAR OF OUR CHILDREN'S ACTIVITIES ON NATIONAL LIGHTHOUSE DAY, AND A CONTINUING ALTERNATE**

MAY 16 TOWER CLEANUP CREW

LAST WEDNESDAY 8 OF US SPENT THE MORNING SPRUCING UP THE TOWER FOR THE 2026 SEASON

- **SUE B.**
- **ADAIR H. AND SHANGHAIED HUSBAND, PETER**
- **JACQUELINE M.**
- **SARAH P.**
- **MIKE V.**
- **STEVE W.**

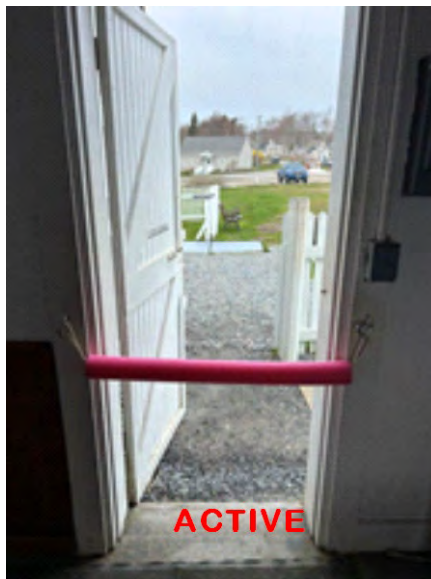
WE ANTICIPATE SCHEDULING PERIODIC CLEANUPS OVER THE SEASON SO PLEASE HELP US OUT

WHAT'S THE SAME FOR 2026

- **A DOCENT IS RESPONSIBLE FOR:**
 - **ENSURING OUR GUESTS HAVE A SAFE, ENJOYABLE AND EDUCATIONAL EXPERIENCE WHILE FOLLOWING ALL RULES**
 - **46" HEIGHT REQUIREMENT**
 - **MAX OF 5 ADULTS IN A GROUP**
 - **KEEP A COUNT OF ALL VISITORS**
 - **DON'T TOUCH THE LENS!!**
 - BEING COGNIZANT OF OUR STEWARDSHIP AS PART OF THE AMERICAN LIGHTHOUSE FOUNDATION'S CARING FOR A 191 YEAR OLD HISTORICAL STRUCTURE
 - THE LIGHTHOUSE IS NOT PART OF BRISTOL P&R. THEY DO NOT PROVIDE ANY MONEY TO FPPL!!
 - COLLECTING THE SUGGESTED \$1 MINIMUM DONATION PER PERSON TO CLIMB THE TOWER AND PROMOTE MERCHANDISE DONATIONS – CASH OR CHECK, NO INTERNET TRANSACTIONS POSSIBLE, ATM AVAILABLE AT SEAGULL SHOP...
 - THE KEYS AND IDs ISSUED TODAY, TO BE RETURNED AT THE END OF THE SEASON

POOL NOODLE *VELVET ROPE*

- **CROWDING IN THE VESTIBULE BY PEOPLE WALKING IN HAS BECOME PROBLEMATIC**
 - **FIRE CODE ONLY ALLOWS FOR 11 PEOPLE IN THE BUILDING, SO:**
 1. **USE THE ROPE TO ALLOW A GROUP OF 5 INTO THE VESTIBULE**
 2. **WHEN THIS GROUP GOES UP INTO THE LANTERN ROOM, YOU CAN ALLOW A SECOND GROUP OF 5 INTO THE VESTIBULE**
 3. **WHEN THE LANTERN GROUP COMES DOWN, ALLOW THE WAITING GROUP UP INTO THE LANTERN ROOM**
 4. **ONCE THAT GROUP HAS ASCENDED INTO THE LANTERN ROOM, UNHOOK THE ROPE TO LET THE FIRST GROUP OUT AND THEN ALLOW ANOTHER GROUP OF 5 IN**



WHY ***DON'T TOUCH THE LENS??***

OUR ICONIC 4TH ORDER FRESNEL LENS HAS STOOD SINCE 1857 AND WE WANT IT TO CONTINUE ITS VIGIL FAR INTO THE FUTURE. OF MAINE'S 63ish OPERATIONAL LIGHTHOUSES, ONLY 8 STILL HAVE FRESNELS!!

OILS FROM FINGERS ATTRACT DUST PARTICLES, AND AS THESE PARTICLES HEAT IN SUNLIGHT, THEY MAY CAUSE CRACKS AND DINGS IN THE LENS'S OPTICAL GLASS. WHEN THERE'S TOO MUCH DAMAGE TO THE LENS, THE USCG WILL BE FORCED TO REPLACE IT WITH A LESS ICONIC SYSTEM



WHAT'S THE SAME FOR 2026

- A DOCENT IS RESPONSIBLE FOR:
 - ENSURING OUR GUESTS HAVE A SAFE, ENJOYABLE AND EDUCATIONAL EXPERIENCE WHILE FOLLOWING ALL RULES
 - **46" HEIGHT REQUIREMENT**
 - **MAX OF 5 ADULTS IN A GROUP**
 - **KEEP A COUNT OF ALL VISITORS**
 - **DON'T TOUCH THE LENS!!**
 - BEING COGNIZANT OF OUR STEWARDSHIP AS PART OF THE AMERICAN LIGHTHOUSE FOUNDATION'S CARE OF A 191 YEAR OLD HISTORICAL STRUCTURE
 - THE LIGHTHOUSE IS NOT PART OF BRISTOL P&R. THEY DO NOT PROVIDE ANY MONEY TO FPPL!!
 - COLLECTING THE SUGGESTED \$1 MINIMUM DONATION PER PERSON TO CLIMB THE TOWER AND PROMOTE MERCHANDISE DONATIONS – CASH OR CHECK, **NO INTERNET TRANSACTIONS POSSIBLE**
 - THE KEYS AND IDs ISSUED TODAY, TO BE RETURNED AT THE END OF THE SEASON

DOCENT RESPONSIBILITIES *CONT'D*

- **RESPONSIBLE FOR DETERMINING THE IMPACT OF RAIN ON OPERATIONS**
- **SUGGESTING THAT VISITORS SIGN THE GUEST BOOK**
- **PM DOCENTS:**
 - **LEAVE \$25 IN SINGLE DOLLAR BILLS IN THE LARGE MONEY JAR AS YOU CLOSE OUT FOR THE DAY**
 - **FILL OUT THE DAY'S SUMMARY DONATION, PUT IT AND THE CASH IN THE ENVELOPE TO DELIVER TO 126 DREBELBIS POINT ROAD**

DAILY DONATION FORM

FPPL Donations

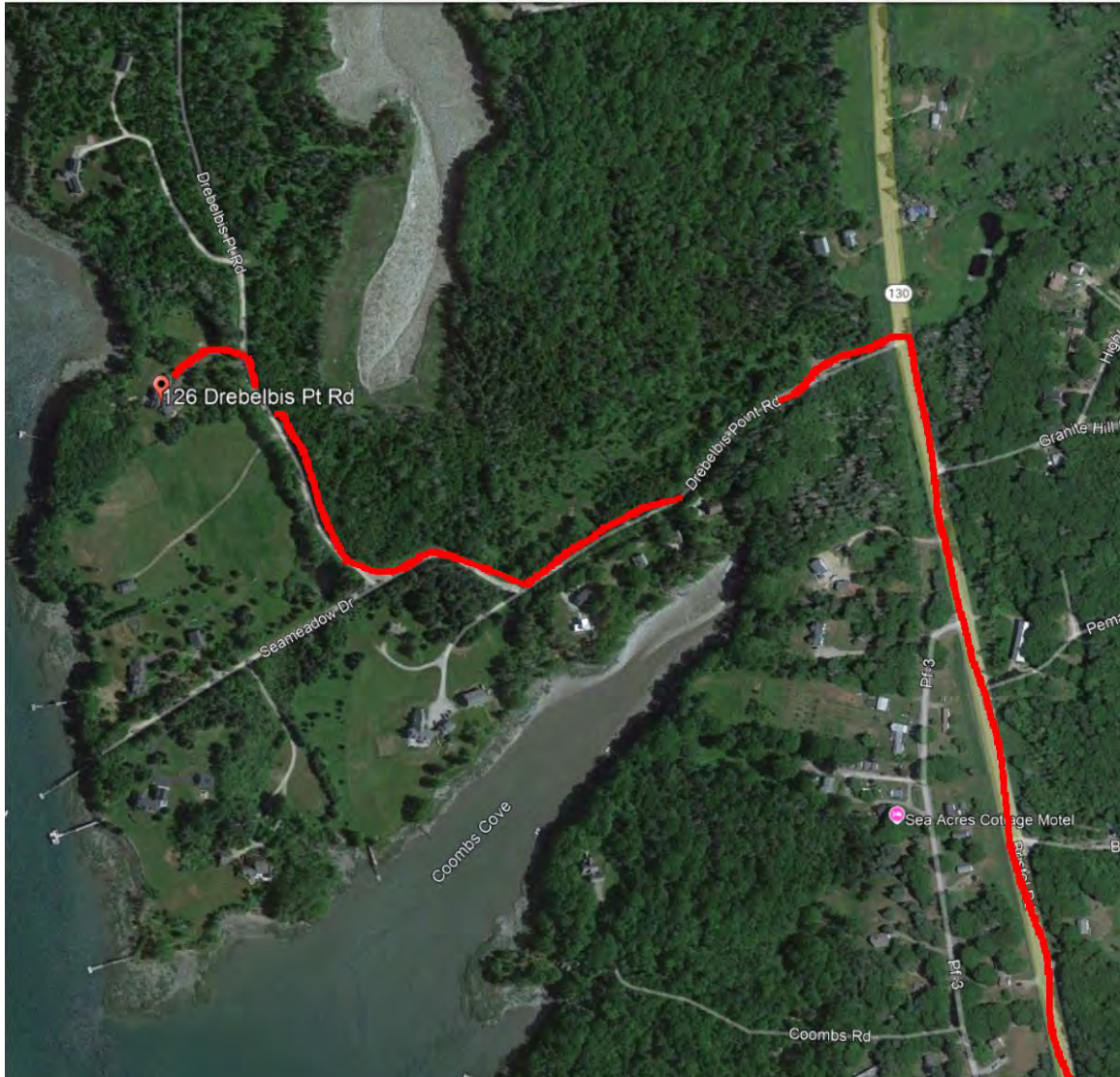
Date: CRITICALLY IMPORTANT

Total \$ (optional): OPTIONAL

Docent: IMPORTANT, BOTH AM & PM NICE

of Visitors CRITICALLY IMPORTANT

Where is 126 Drebelbis Point Road?



Drebebis Pt Rd the first left AFTER you pass Granite Hills Rd on your right heading North on ME-130. There are guard rails on both sides of the road just prior to Drebelbis. There are orange lobster buoys on a tree at the street end of my driveway, and a blue 126 number sign. Cooler is alongside the garage facing the shed.



IMPORTANT TO REMEMBER

THE TOWER EXHAUST FAN IS TAPED **ON**. IT WILL GO ON WHEN YOU TURN ON THE LIGHTS. THERE'S NO NEED TO ADJUST THE RHEOSTAT ON THE WALL BY THE TOP OF THE SPIRAL STAIR LANDING.

THE SMALL FAN IN WINDOW SILL ON THE STEPS IS ALSO ON A TIMER, GOING ON AT 10 AM AND OFF AT 6 PM

IF THE LIGHT GOES ON BECAUSE OF DARKNESS, YOU SHOULD START CLOSING DOWN. NO ONE SHOULD BE IN THE LANTERN ROOM WHEN THE LIGHT IS OPERATIONAL. RARE, BUT IT CAN OCCUR ON DREARY, OCTOBER DAYS.

NO PETS ARE ALLOWED IN THE VESTIBULE/TOWER INCLUDING:

- SERVICE ANIMALS
- DOCENT PETS

PLEASE BE MINDFUL IN YOUR DRESS: KEEP IT CLEAN, NEAT AND TASTEFUL

WE HAVE 2 DIFFERENT PASSPORT STAMPS

Pemaquid Point
Lighthouse

1
8
2
7



MAINE
1820



2003
E PLURIBUS UNUM

WHEN YOU HAVE INTERNET SERVICE

SOCIAL MEDIA

- **INSTAGRAM:** <https://www.instagram.com/pemaquidpointlighthouse/>
- **WEBSITE:** www.pemaquidpointlight.org
- **DOCENT NEWS:** <https://www.pemaquidpointlight.org/docent-news/>

WHAT'S NEW FOR 2026

**NEW, UPDATED AND IMPROVED
VESTIBULE DISPLAYS!!!!**

**THANKS TO ADAIR H., EMILY M., SUE B. & ANN-
MARIE T. FOR THIS MAJOR PROJECT!!**

WHAT'S NEW FOR 2026 *CONT'D*

ANTERN ROOM TEMPERATURE:

A REMOTE TEMPERATURE DISPLAY IS IN THE VESTIBULE, SHOWING THE LANTERN ROOM TEMPERATURE AND RELATIVE HUMIDITY. AS ALWAYS ON THE HOT DAYS, THE AM DOCENT SHOULD OPEN THE LANTERN ROOM DOOR AND MAKE SURE THE FAN IS RUNNING. EVEN SO TEMPS IN UPSTAIRS COULD EXCEED 100°F SO MAKE SURE YOU WARN OUR GUESTS ABOUT DANGEROUSLY HIGH TEMPERATURES.



LANTERN ROOM TEMP °F

**LANTERN ROOM RELATIVE
HUMIDITY %**

VESTIBULE TEMP °F AND RH%

STATIONKEEPER

WE HAVE JOINED 6+ OTHER ALF LIGHTHOUSES AS A STATIONKEEPER SITE

You Are Standing at a StationKeeper Site

Protecting marine life and ensuring vessel safety
—right from this location

What is StationKeeper?

StationKeeper is a marine safety and conservation network powered by AIS (Automatic Identification System) technology. These stations monitor vessel activity and broadcast automated safety messages to ships in nearby waters—encouraging safer navigation and protecting sensitive coastal zones.

Why This Location Matters?

Public sites like aquariums, lighthouses, museums, life saving stations, and historic coastline structures play a critical role in ocean stewardship. Hosting a StationKeeper site allows this location to support real-time communications that reduce vessel strikes, protect marine habitats, and educate the public about ocean conservation.

What This Station Does

Monitors vessel activity in nearby protected waters
Broadcasts automatic speed and safety messages to nearby ships
Identifies conservation zones, endangered species, and marine infrastructure
Provides valuable data to mariners, scientists, and conservation groups

StationKeeper is a MotionInfo AIS network created in collaboration with participating sites to protect our oceans in real time.

To learn more or participate:
motioninfo.com/stationkeeper



What is StationKeeper?

StationKeeper is a marine safety and conservation network powered by AIS (Automatic Identification System) technology. These stations monitor vessel activity and broadcast automated safety messages to ships in nearby waters—encouraging safer navigation and protecting sensitive coastal zones.

Why This Location Matters?

Public sites like aquariums, lighthouses, museums, life saving stations, and historic coastline structures play a critical role in ocean stewardship. Hosting a StationKeeper site allows this location to support real-time communications that reduce vessel strikes, protect marine habitats, and educate the public about ocean conservation.

To learn more or participate:

motioninfo.com/stationkeeper

AFTER HOUR/OFF SEASON TOURS

- In 2025, we offered a couple of after hours/off season private tours asking a \$100 minimum donation for the tours. Guest always gave donations much greater than the requested minimum
- We will try to increase the number of these of *ad hoc* tours, but we need docents to pull this off in addition to their normal docent responsibility.
- We're looking to enlist a few motivated docents who are:
 - Extremely knowledgeable of both the lighthouse, other lighthouses and the Pemaquid Peninsula/Damariscotta area
 - You will be up in the lantern room with these guests helping them understand our lighthouse and the nautical nuances of the area
 - Plan on spending at least 1 hour for the tour, but don't be surprised if it stretches out longer
- Able to available at fairly short notice, we ask for a minimum of 1 day's notice, but their could be some last minute attempts
- Please let an Executive Committee Member if you're be available and interested in doing this

WHAT MAY COME BACK IN 2026?

EXECUTIVE COMMITTEE IS CONSIDERING AN
AUGUST DOCENT RECOGNITION DINNER

➤ WE NEED VOLUNTEERS TO HELP PLAN AND EXECUTE THIS,
ANY TAKERS?

SETTING THE STAGE FOR 2027 DON'T BE CONFUSED

**IN 2027, WE'LL BE CELEBRATING THE 200TH ANNIVERSARY OF A LIGHT
STATION AT PEMAQUID POINT, ESTABLISHED 1827, NOT THE 200TH
BIRTHDAY OF THIS LIGHTHOUSE**

**THE MASON WHO ERECTED THE 1827 TOWER USED SALT WATER TO MIX
THE MORTAR AND THE TOWER BEGAN TO QUICKLY DETERIORATE!**

**THE CURRENT TOWER, BUILT IN 1835, IS A PHOENIX! IT
CONTAINS MANY MATERIALS FROM THE ORIGINAL 1827
TOWER, ASSEMBLED WITH FRESH WATER-MIXED MORTAR!!**



LOOKING FORWARD TO 2027 – GETTING READY FOR THE LIGHT STATION’S BICENTENNIAL

2026 PROJECTS –

- SECURING THE \$100,000 NECESSARY TO FUND ALL NECESSARY PROJECTS & CELEBRATION
- GETTING PROJECT PLANS APPROVALS FROM SHPO AND USCG
- SETTING UP A BICENTENNIAL COMMITTEE TO PLAN AND EXECUTE THE EVENT – **ANY VOLUNTEERS??**

LIGHT STATION BICENTENNIAL PROJECT LIST

Gallery Railing Replacement:	\$13,500
Stripping and prepping all metal parts of gallery including the underside of the gallery floor:	\$19,600
Stripping and painting of all metal parts on the inside of the lantern room and the spiral staircase:	\$17,800
Painting of the entire lighthouse exterior:	\$31,900
Support Expense: Lodging and boom lift rental:	\$4,600
Total January 2026 Estimate Cost:	\$87,400
4.5% Inflation & Project Expense allowance:	\$12,600
Total Project Expense:	\$100,000

BICENTENNIAL *CONT'D*

**JECT FUNDING: AT OUR CURRENT RUN RATE OF NORMAL FUND RAISING THROUGH THE \$1 DONATION AND
ATIONS FOR STORE ITEMS, WE *SHOULD* BE ABLE TO FUND ALL THE SPECIAL BICENTENNIAL PROJECTS AND
NTS**

T BEING SAID, THERE ARE SOME THINGS WE WILL MONITOR:

ITEMS IN OUR CONTROL:

- THE BOARD WILL KEEP OPERATIONAL EXPENSES AS LOW AS POSSIBLE
- BEING DILIGENT IN THE \$1 MINIMUM SUGGESTED CLIMBING DONATION:
 - HERE ARE THE REASONS:
 - THE \$4 ENTRY FEE TO THE PARK GOES DIRECTLY TO BRISTOL
 - THE \$1 DONATION IS HOW WE MAINTAIN THE TOWER AND KEEP IT OPEN FOR VISITORS
 - WE PAY FOR THE TOWER'S LEASE AND INSURANCE SO PEOPLE CAN VISIT

ITEMS OUT OF OUR CONTROL:

- PARK ATTENDANCE LIKE WEATHER, REDUCED MAINE TOURISM, *ETC.*
- PEOPLE CONCERNED ABOUT THE ECONOMY AND THE IMPACT OF THAT FOR THEMSELVES

SUMMARY

- **2026 WILL BE A CRUCIAL ONE FOR FPPL, WILL WE BE ABLE TO BEAR THE BRUNT OF THE NECESSARY EXPENSES TO GET THE TOWER READY FOR 2027??**
- **YOUR PARTICIPATION AND DEDICATION ARE KEY TO ACHIEVING OUR GOALS, AND KEEP THE PEMAQUID POINT LIGHTHOUSE AS THE PREMIER LIGHTHOUSE TO VISIT IN MAINE!!**
- **THANKS TO YOU, WE WILL MAKE THIS HAPPEN!!**
- **QUESTIONS??**

AGENDA

ALF UPDATE – BOB TRAPANI, ALF
EXECUTIVE DIRECTOR

2025 SUMMARY & 2026 OVERVIEW – DOM

STORE UPDATE – STEVE

NEW VESTIBULE DISPLAY – SUE/ADAIR

NEW DOCENT TRAINING – ADAIR

AGENDA

ALF UPDATE – BOB TRAPANI, ALF
EXECUTIVE DIRECTOR

2025 SUMMARY & 2026 OVERVIEW – DOM
STORE UPDATE – STEVE

NEW VESTIBULE DISPLAY – SUE/ADAIR

NEW DOCENT TRAINING – ADAIR

AGENDA

ALF UPDATE – BOB TRAPANI, ALF
EXECUTIVE DIRECTOR

2025 SUMMARY & 2026 OVERVIEW – DOM

STORE UPDATE – STEVE

NEW VESTIBULE DISPLAY – SUE/ADAIR

NEW DOCENT TRAINING – ADAIR